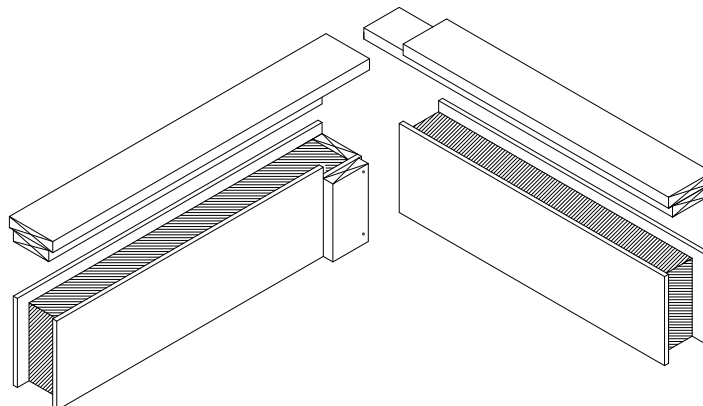
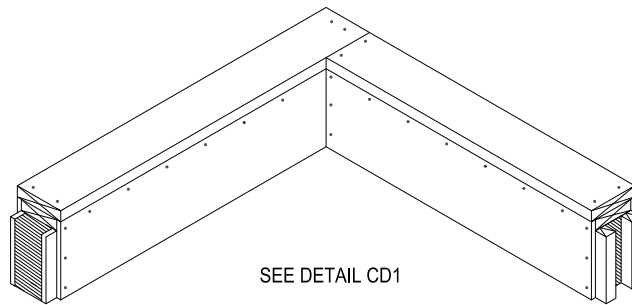
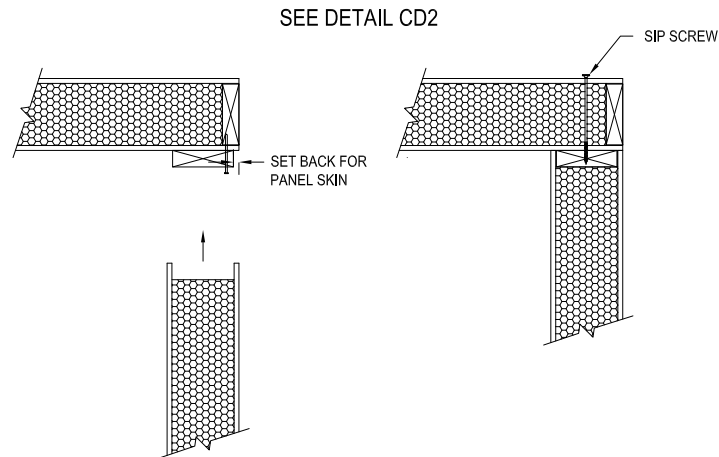


## V. Corners

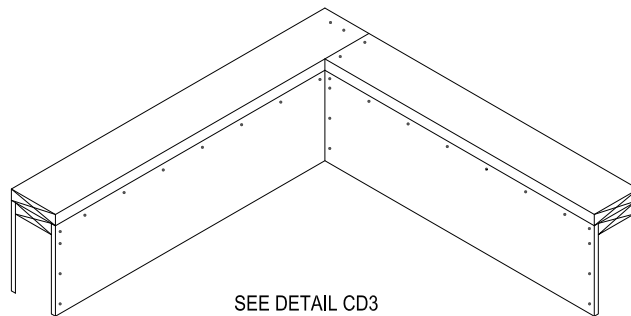
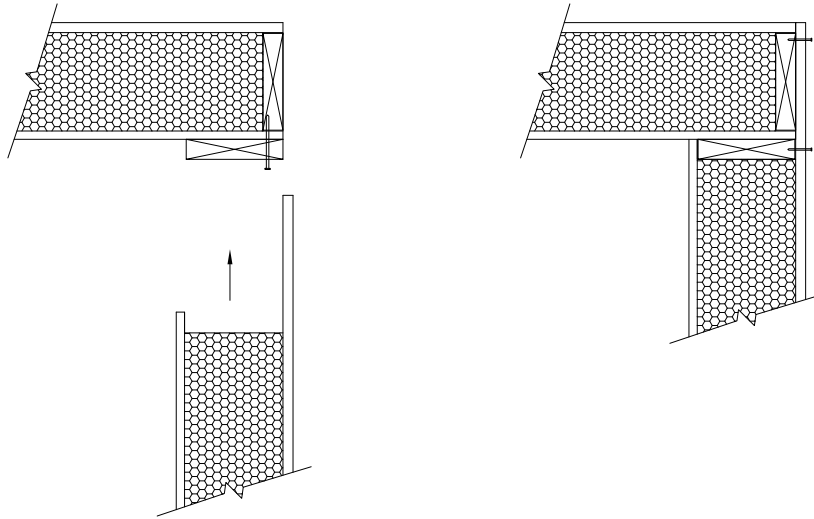
The two basic corner details used are butt corners & fly-by corners. The butt corners are most commonly used with standard residential wall panels while the fly-by corners are used with foundation panels and our Solid Core line of buildings.

*Butt corner:*



*Fly-by corner (foundation panel corner shown):*

SEE DETAIL CD4



SEE DETAIL CD3

